

Inari-Saariselkä is far away in the North and yet just a few hours away from southern Finland. Lapland is well connected to the world through flights, highways and railways combined with bus connections.



You're welcome to fall in love with our open fells



### Open Fell Biking Partners

**Saariselän Keskusvaraamo**  
Honkapolku 2, 99830 Saariselkä  
+358 16 5540500  
[saariselka.com](http://saariselka.com)  
🚲 🏠 🍷

**Holiday Club Saariselkä**  
Saariseläntie 7, 99830 Saariselkä  
+358 300 870969  
[holidayclubresorts.com](http://holidayclubresorts.com)  
🚲 🏠 🍷

**Inari-Saariselkä Keskusvuokraamo Kuukkeli**  
Saariseläntie 1, 99830 Saariselkä  
+358 600 302700  
[bikes.saariselka.info](http://bikes.saariselka.info)  
🚲 🍷 🏠

🚲 bike rental vuokrapyyörät  
🔧 bike service huolto  
👤 guided tours opastus

**Suomen Latu Kiilopää Fell Centre Kiilopää**  
Kiilopääntie 620, 99830 Saariselkä  
+358 16 6700700  
[kiilopaa.fi](http://kiilopaa.fi)  
🚲 🏠 🍷

**Roll Outdoors**  
🚲 🏠 🍷

**Santa's Hotel Tunturi**  
Lutontie 16, 99830 Saariselkä  
+358 400 102 191  
[santashotels.fi](http://santashotels.fi)  
🚲 🏠

**Saariselkä Ski & Sport Resort Ltd**  
Kullanhuutojantie, 99830 Saariselkä  
+358 16 668882  
[skisaariselka.fi](http://skisaariselka.fi)  
🚲 🏠 🍷

🏠 accomodation majoitus  
🍷 restaurant ravintola  
🛀 spa kylpylä

**Wilderness Hotel Muotka**  
Muotkantie 204, 99830 Sodankylä  
+358 50 4307600  
[nellim.fi](http://nellim.fi)  
🚲 🏠 🍷

**Lapland Hotels Riekonlinna**  
Saariseläntie 13, 99830 Saariselkä  
+358 16 5594455  
[laplandhotels.com](http://laplandhotels.com)  
🚲 🏠

**Lapland Safaris Saariselkä**  
Saariseläntie 13, 99830 Saariselkä  
+358 16 3311280  
[fellsandoutdoors.com](http://fellsandoutdoors.com)  
[laplandsafaris.com](http://laplandsafaris.com)  
🚲 🏠 🍷

**Lapin Luontolomat**  
99830, Lutontie 3, 99830 Saariselkä  
+358 16 668706  
[lapinluontolomat.fi](http://lapinluontolomat.fi)  
🚲 🏠 🍷

**Urho Kekkosen kansallispuiston palvelupiste Kiehin**  
Lutontie 16, 99830 Saariselkä  
+358 40 168 7838  
[luontoon.fi/urhokekkosenkansallispuisto](http://luontoon.fi/urhokekkosenkansallispuisto)

**Inari-Saariselkä Tourism**  
[inarisariselka.fi](http://inarisariselka.fi)  
🚲 🏠 🍷

## Open Fell Biking in Saariselkä is a one of a kind experience.

Within minutes from your accommodation, you'll be on top admiring the infinite chains of fells in the horizon. These big hills used to be mountains before the ice age rounded them and made them perfect for mountain biking. They're "open" because the arctic climate doesn't allow them to grow trees.



### Wide variety of trails

OFB terrain caters both for those eager to try a mountain bike or a fatbike for the first time and for those who want the ultimate adventure in the arctic wilderness. For beginners and families, Saariselkä is safe and fun place to try a fat bike, an electric bike or winter biking. Our smooth OFB tracks are not too steep, rocky or mushy. You can ride up and down and even over the round shaped fells on readily marked routes.

Experienced riders can push their limits on a myriad of trails in Urho Kekkonen national park and surrounding areas. Keep in mind you have to stay on marked trails within the national park. OFB signature rides for the experienced are Kulmakuru and Rautulampi trails. Both offering true adventure by bike, gorgeous sceneries and technically challenging sections.



### Modern services in the middle of the wilderness

Saariselkä is a far, yet safe destination. While it's a home for Sámi, Europe's only recognized indigenous people, it also serves as a fully-fitted, modern bike resort with hotels, restaurants, groceries, spa facilities, glass igloos, bike rentals, bike guides and rescue services. The access to the trails is quicker and easier than in most resorts.



### Mountain Biking routes

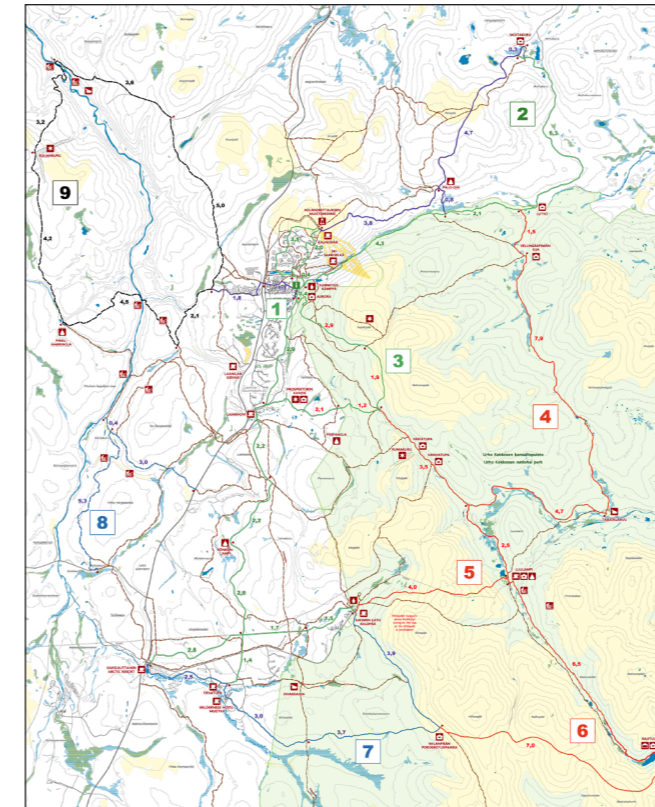
230 kilometres of summer routes to explore as day trips, overnight bikepacking within the area or as part of an epic Arctic Bikepacking Trail adventure through Finnish Lapland and Arctic Norway. In the summer, you can ride around the clock in the midnight sun.

Sleep late and start in the afternoon – not because it's too hot but because you're having a holiday. The summer breeze in the open fells means less mosquitoes than you would think.

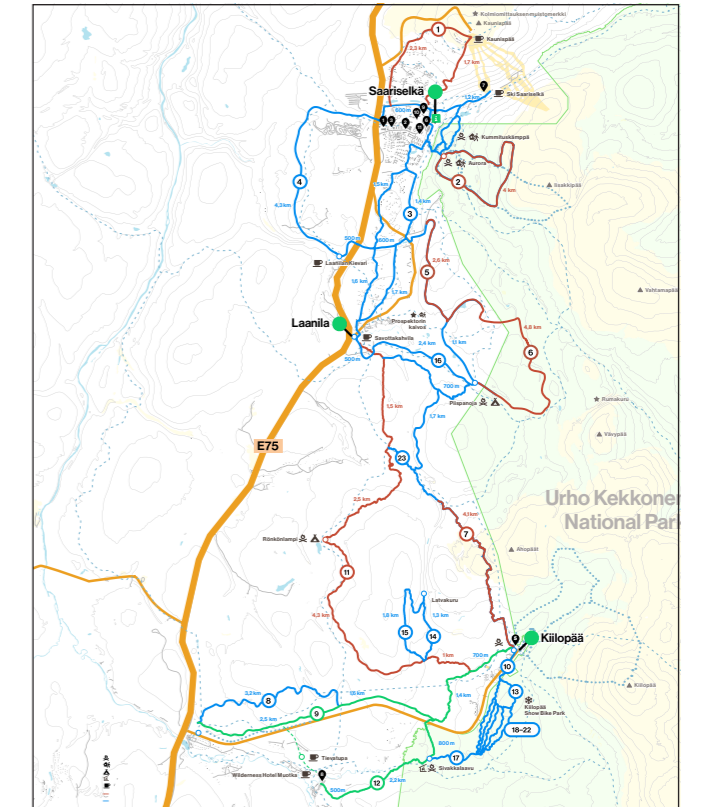


### Informative OFB Maps

Summer Map



Winter Map



### The Polar Year

The Inari-Saariselkä region in Finnish Lapland is a beautiful travel destination all year round. We have eight different seasons and each season has special features that need to be seen and experienced. And what's the best thing for a biker, all of these seasons can be explored by bike.

