



INARI

*Mighty by nature*

## INARI MUNICIPALITY

Established in 1876

### MUNICIPAL COAT OF ARMS

Silver whitefish with golden reindeer antlers on a black background.

The coat of arms symbolizes traditional sources of livelihood in the municipality.

Designer: Ahti Hammar, 1955



## NEIGHBOURS OF INARI MUNICIPALITY

**Finnish municipalities**

Enontekiö

Kittilä

Sodankylä

Utsjoki

**Norway**

**Russia**



## AREA OF INARI MUNICIPALITY

Total area,	17 321 km <sup>2</sup>	2,2 km <sup>2</sup> / inhabitant
whereof water area	2 148 km <sup>2</sup>	0,3 km <sup>2</sup> / inhabitant
Protected area, total	10 948 km <sup>2</sup>	
Urho Kekkonen National Park (a part)	62 km <sup>2</sup>	
Lemmenjoki National Park	2 850 km <sup>2</sup>	
Wilderness area, total	6 030 km <sup>2</sup>	
Other protected areas	2 006 km <sup>2</sup>	



## **INARI IS THE LARGEST MUNICIPALITY IN FINLAND**

### Distances

Ivalo – Helsinki	1123 km
Ivalo – Rovaniemi	288 km
Ivalo – North Cape	415 km
Ivalo – Murmansk	303 km
Kakslauttanen – Näätämö	255 km
Ivalo – Kuttura (the longest distance to school)	80 km

## POPULATION OF INARI

Population 31.12.2017	6 874
Change in 2016	+0,7 %

Sami population	2 200
North Sami	900
Inari Sami	700
East Sami	600

The population age structure in 2017

0-14	12,9 %
15-64	62,6 %
65-	24,9 %



## LANGUAGES SPOKEN IN INARI MUNICIPALITY

Finnish

North Sami

Inari Sami

East Sami



## JOBS BY EMPLOYER SECTOR 2015

Primary production	7,4 %
Manufacturing	7,0 %
Services	83,3 %
- public	
- private	
Other sectors	2,3 %





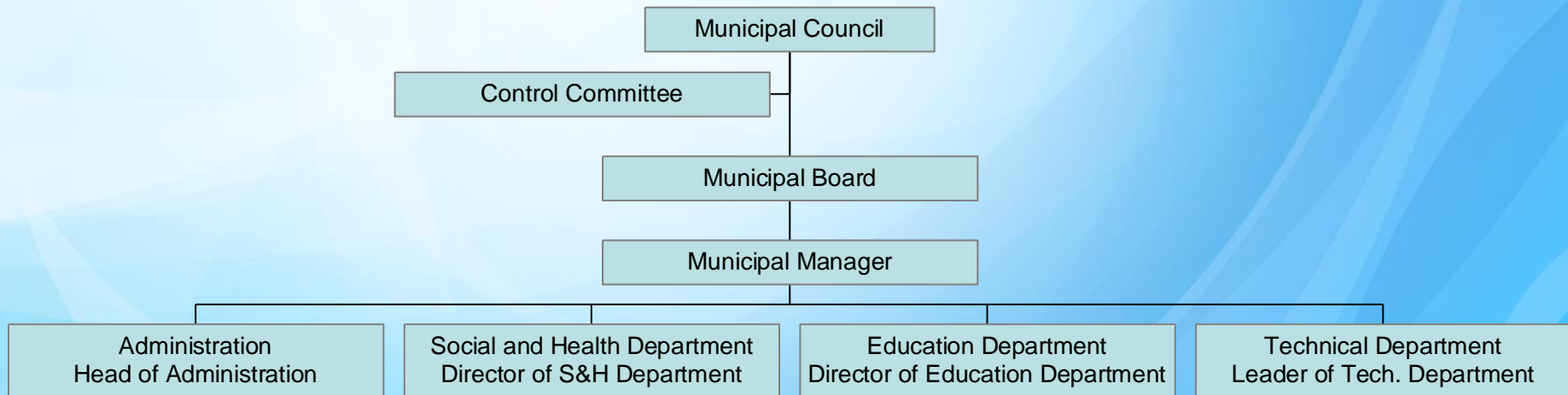
## EMPLOYMENT

<b>Employment situation</b>	2001	2009	2015	2016	2017
Unemployment rate %	21,3	14,5	17,2	13,6	13,4
Employment rate %					68,9

The biggest employers:

Inari Municipality	581 persons
The Finnish Border Guard	
Metsähallitus (Forest and Park Service)	
Tourism, total impact	
Sami organisations, total impact	

## ADMINISTRATIVE ORGANISATION OF INARI MUNICIPALITY



## MUNICIPAL ADMINISTRATION

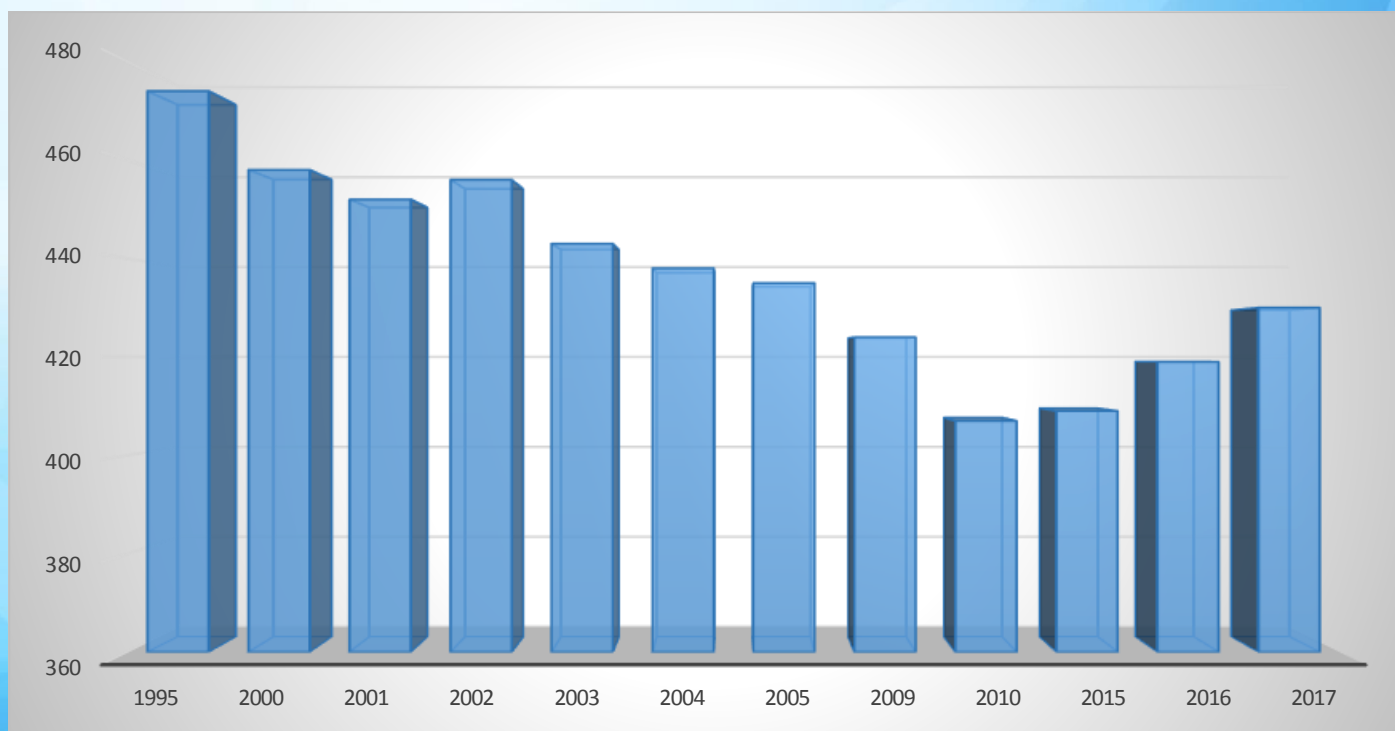
Council seats by political parties  
2017 – 2021

National Coalition Party	10
Centre party	6
Left Alliance	4
Social Democratic Party	4
Green League	3
True Finns	0
Total	27

Female members            15    55,5%



## PERSONNEL OF INARI MUNICIPALITY 1995-2017





## **MUNICIPAL BOARD**

Municipal Board is responsible for

- 1) Administration and economy of the Municipality
- 2) Preparation, implementation and monitoring the legality of the decisions made by the Municipal Council
- 3) Looking after the best interests of the municipality, and representing the municipality and speaking for it, unless otherwise stated in the rules of procedure
- 4) If needed, giving instructions to persons representing the municipality in different communities, institutions and funds, specially as regards the municipal viewpoint on issues under handling.

## **MUNICIPAL BOARD**

Municipal Manager

## **ADMINISTRATION DEPARTMENT**

Led by Head of Administration.

Fields of responsibility and persons in charge:

Administration – Head of Administration, Head of  
Communications and Co-operation

Head of IT-services, Head of Economy and the Planning  
Specialist

Fisheries Development Fund – Head of Route Planning

Food Services Company – Food Services Director

## **SOCIAL AND HEALTH DEPARTMENT**

Responsibilities of the Committee for social and health services

- 1) Social services and income security
- 2) Pre-primary education stipulated in basic education act.
- 3) Public health services and specialist medical care
- 4) Tasks appointed for social and health services in different laws and acts.
- 5) Alcohol and drugs interventions

## **SOCIAL AND HEALTH DEPARTMENT**

The environmental sub-department of the social and health committee has been appointed following tasks in Inari and in Utsjoki

- 1) Environmental health care and environmental protection
- 2) Veterinary services and animal protection
- 3) Tasks related to rural development authority in Inari Municipality



## **SOCIAL AND HEALTH DEPARTMENT**

The department is led by the Director of social and health department.

Units of responsibilities and persons in charge:

Day care services – Director of day care services

Social work – Director of social work

Out-patients' care – Director of out-patients' care

## **SOCIAL AND HEALTH DEPARTMENT**

Responsible units and persons in charge:

Medical practice, emergency medical service and ambulance service –  
medical director

Institutional care and housing services– director of institutional care

Oral hygiene – leading dentist

Environmental inspection, veterinary services and rural development  
services – municipal veterinarian and leader of health inspection

## **EDUCATION DEPARTMENT**

Committee of education is responsible for:

- 1) Pre-primary and basic education, as stated in basic education act.
- 2) Morning and afternoon activities for pupils, as stated in basic education act.
- 3) Upper secondary school education, as stated in general upper secondary schools act.
- 4) Vocational education
- 5) Non-formal adult education and basic education in arts
- 6) Library and information services, cultural activities, sports activities and youth work

## **EDUCATION DEPARTMENT**

The department is led by the director of education department.

Responsible units and persons in charge:

Administration – director of education department

Inari school, classes 1-9 – headmaster

Ivalo primary school, classes 1-6 – headmaster

Ivalo secondary school, classes 7-9 – headmaster

Sevettijärvi school, classes 1-9 – headmaster

Törmänen school, classes 1-6 – headmaster

Ivalo upper secondary school - headmaster



## EDUCATION DEPARTMENT

Responsible units and persons in charge:

Inari community college – headmaster

Library services – director of library services

Cultural services – cultural secretary

Sports services – sports secretary

Youth services – youth secretary



## TECHNICAL DEPARTMENT

Committee of technical services is responsible for:

- Real estate services, environmental services, building, private roads issues
- Land use planning and environmental planning
- Building inspection tasks
- Tasks stated in land extraction act
- Inspection of traffic routes, streets, market squares and parks
- Operations of facilities services company



## **TECHNICAL DEPARTMENT**

The department is led by the director of technical department.

Responsible units and persons in charge:

Administration – director of technical department

Building inspection – building inspector

Community planning - planning engineer

Community building – land construction engineer

Facilities services company – leader of real estate services

## MUNICIPAL ECONOMY

### Municipal income in 2017

Tax income, total	26,68 mil. €
State subsidies	23,46 mil. €
Income from operations	9,4 mil. €



## MUNICIPAL ECONOMY

Income tax 2018 and 2019, percentage	19,0	%
--------------------------------------	------	---

Real property tax in 2018-2019, percentages

General	1,35	%
Permanent housing	0,55	%
Other buildings	1,15	%
Non-profit communities	0,0	%

## MUNICIPAL ECONOMY

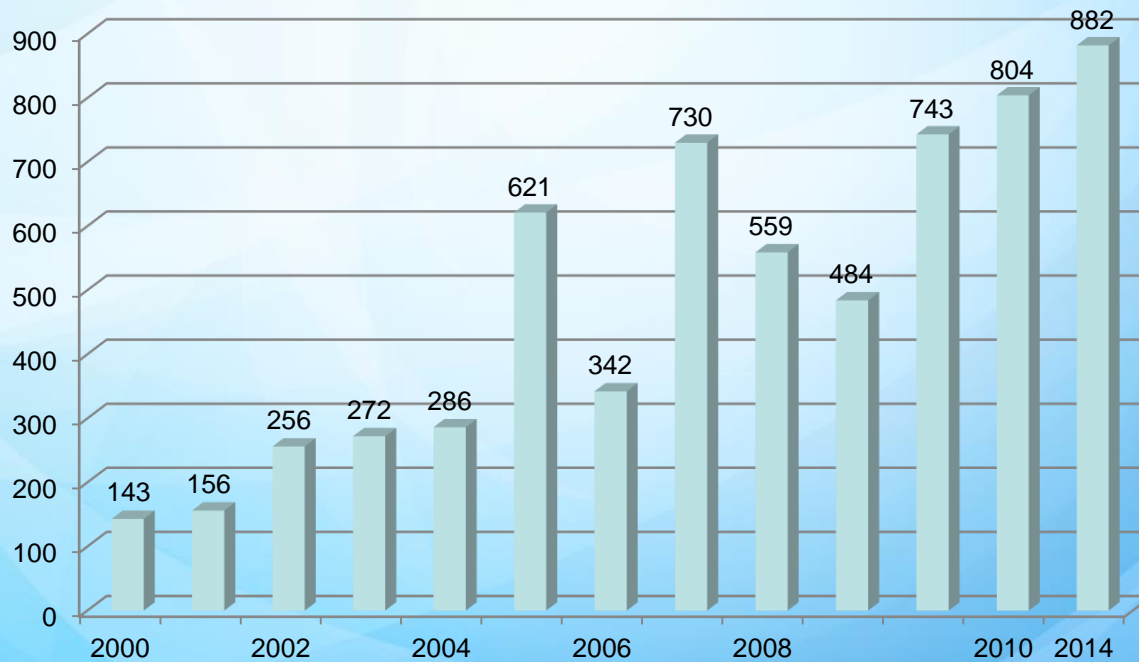
### Expenditure of the Municipality in 2017

Municipality / operating expenditure	55,3 mil. €
Municipality / investments	4,2 mil. €

## ECONOMY IN INARI MUNICIPALITY, THE ANNUAL MARGIN IN EURO PER INHABITANT



## NET INVESTMENTS OF INARI MUNICIPALITY



## **MUNICIPAL CORPORATIONS IN INARI**

### Municipal Corporations / Subsidiaries

Inergia Oy (energy)

Inarin Vuokra-asunnot Oy (rental housing)

Kiinteistökehitys Inlike Oy

Inarin Lapin Vesi Oy (water services)

Youth and Holiday Centre Inari Oy

Saariselän Siula Oy (information and shopping centre)

MedInari Oy (medical services)

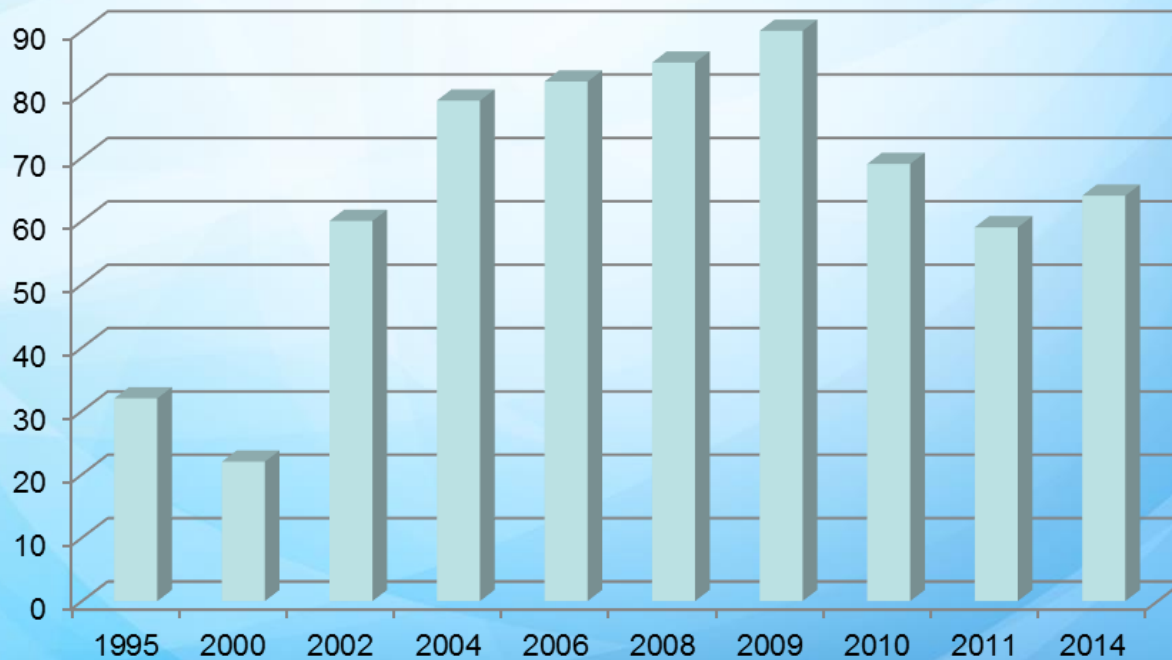
Keskinäinen Kiinteistö Oy Sevettijärven palvelukeskus (housing services)

Kalotin oppimiskeskussäätiö (educational services)

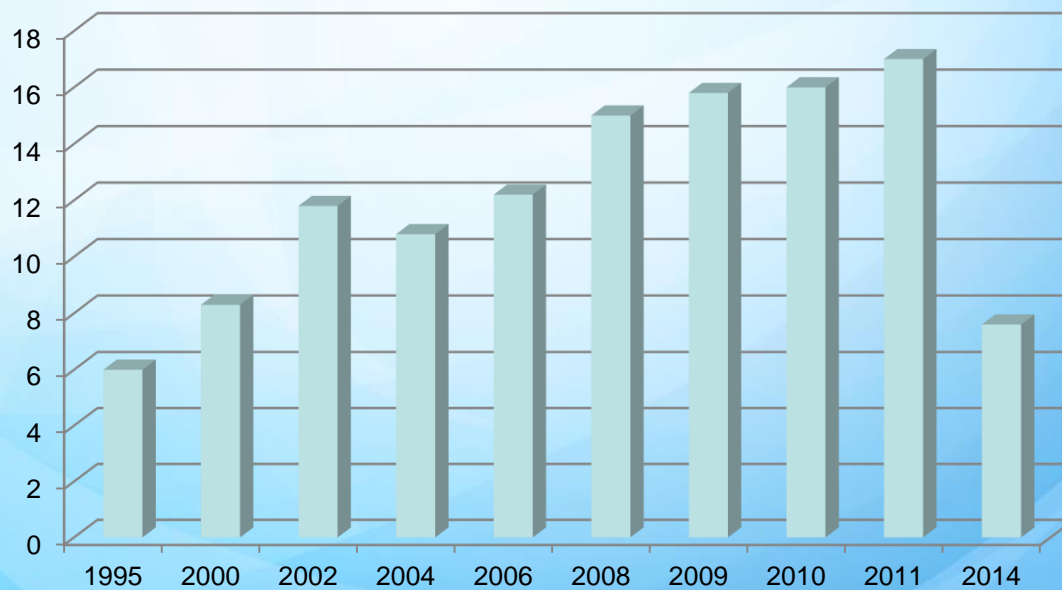
Inarin paikallisradioyhdistys ry (radio services)



## PERSONNEL IN MUNICIPAL CORPORATIONS IN INARI



## TURNOVER OF MUNICIPAL CORPORATIONS IN INARI, MILLION EUROS





## **JOINT MUNICIPAL BOARDS**

Shares in joint municipal boards:

The Lapland Healthcare District

Lapland Waste Management  
Company

Kolpene Service Centre

Regional Council of Lapland

Council of Northern Lapland



# Business & Development Nordica

has provided business and development services in the Municipality of Inari since 1.1.2013. Nordica is a unit operating under the supervision of the Municipal Board and under the guidance of the Board of Directors. Director for Business and Economic Development leads the unit.

Business & Development Nordica is in charge of business and economic development services, international services, development and educational projects, training for businesses. It also represents the interests of the Municipality of Inari and local business life.

The main focus is on

- Arctic nature tourism and cultural tourism
- Cold climate technology; especially car, tyre and car component testing
- Taking advantage of the attraction factors of Inari and of the international location in the core of Barents Region
- Natural resources



## IMPLEMENTATION PROGRAMME FOR INTERNATIONALISATION

- Arctic Corridor –group of projects
- Extending the air terminal in Ivalo
- Developing the international testing fields for cars, tyres and components
- Training for enterprises in
- internationalisation





## TOURISM

Inari – the centre for arctic tourism in Europe

- Internationally well-known image in tourism
- Good traffic connections
- Good network of roads, based on Main Road No 4 / E75
- Connections to northern Norway and northeastern Russia
- Good infrastructure for tourism
- Diverse northern nature
- Multicultural population
- Eight seasons

## INARI - DESTINATIONS

Saariselkä – holiday centre with services

Ivalo – administration centre and node of traffic flow

Inari – centre of Sami culture in Finland

Lake Inari – with the surrounding villages and tourism destinations in the villages



## INARI - DESTINATIONS

Urho Kekkonen National Park and  
Lemmenjoki National Park  
Lake Inari and the hiking area of Inari  
Wilderness areas in different parts  
of Inari



## INARI - DESTINATIONS

Sami Museum and Nature Centre  
Siida

Sami Cultural Centre Sajos

Sami cultural destinations in  
villages





## INARI -DESTINATIONS

Gold traditions at Laanila,  
on River Ivalojoeki, in Inari and  
Lemmenjoki



## TOURISM

Number of travellers in 2017

Approx. 541 222 overnights

Domestic travellers

approx. 43,5 %

International travellers

approx. 56,5 %

Approx. 210 566 travellers arriving by flight

Approx. 77119 travellers arriving by car from Russia to Finland in  
Rajajooseppi

Accommodation capacity

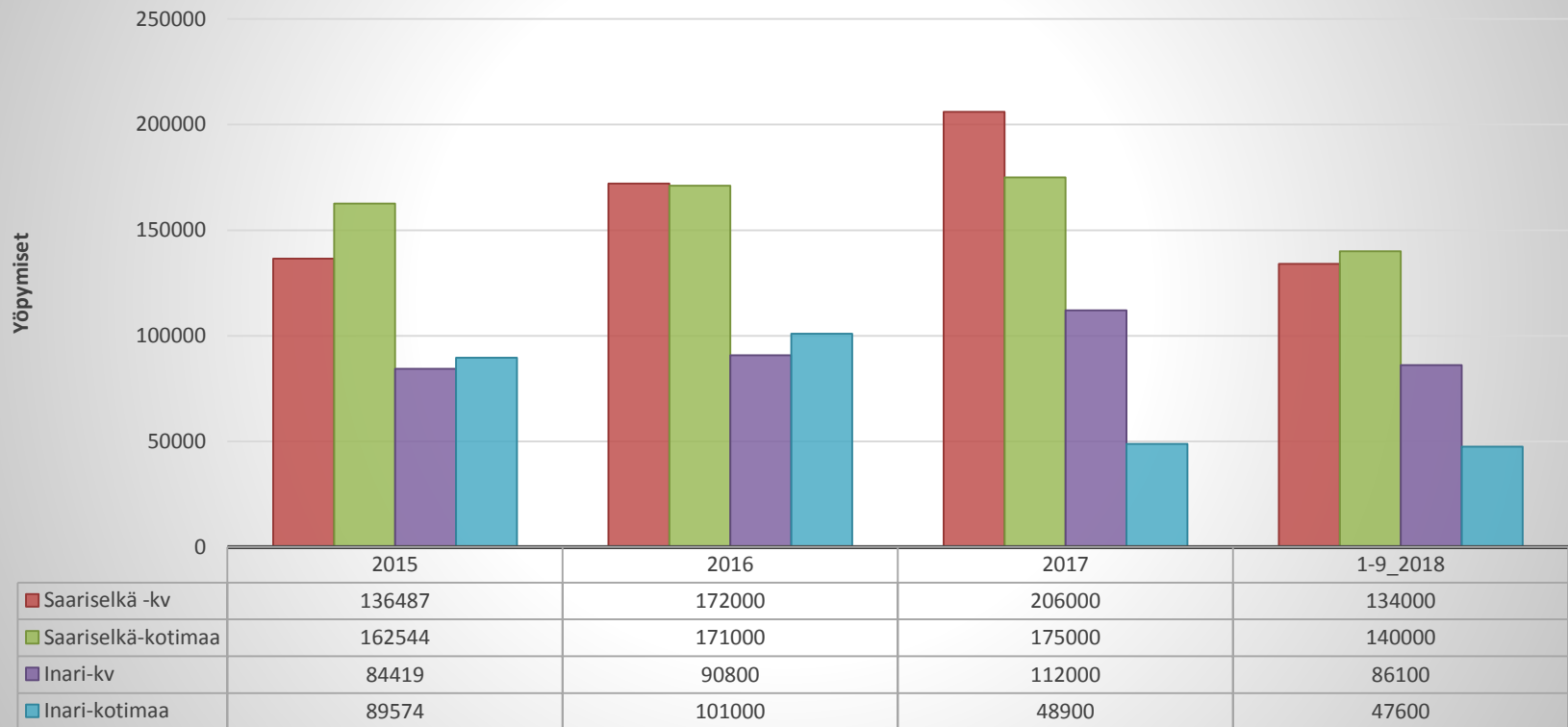
approx. 13 500 bed-places

Occupancy rate

approx. 50 %

## OVERNIGHTS IN INARI AND SAARISELKÄ 2015-2018

### International (kv) and domestic (kotimaa) travellers



## OVERNIGHTS IN INARI-SAARISELKÄ –TOURISM RESORT 2015-2018





## TOURISM

Economic impact of tourism in Inari Municipality in 2014

Direct tourism income	108.7 mil €
Indirect tourism income	83.6 mil €
Impact on municipal economy	2.2-2.6 mil €
Total employment impact	656 man-years

Source: Pekka Kauppila & Jarkko Saarinen (2014) Tourism euros and jobs in Inari



*Mighty by nature*

Inari Municipality  
Piiskuntie 2, FI-99800 Ivalo, Finland

Tel. +358 40 188 7111

Fax +358 16 662 628

[inari@inari.fi](mailto:inari@inari.fi)

[www.inari.fi](http://www.inari.fi)

Dated 11/2018